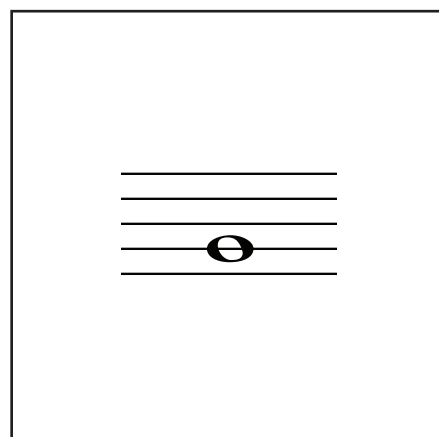
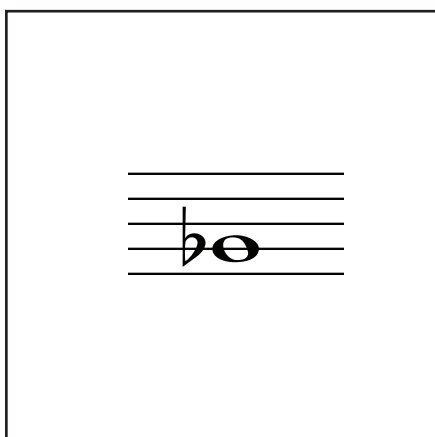
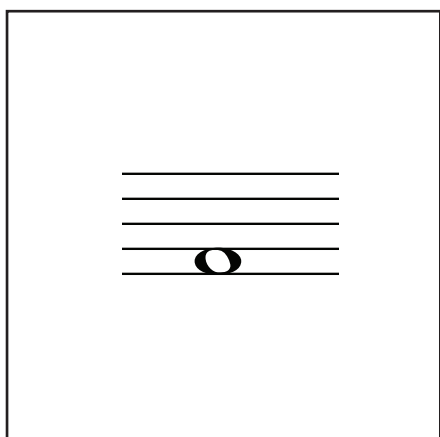
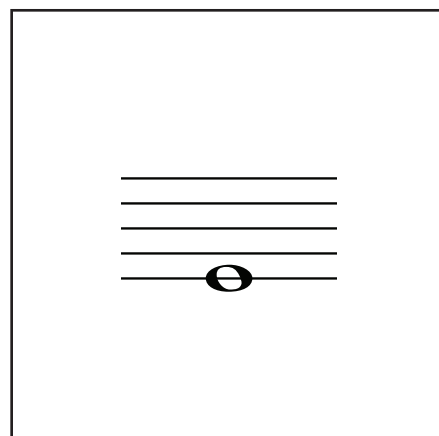
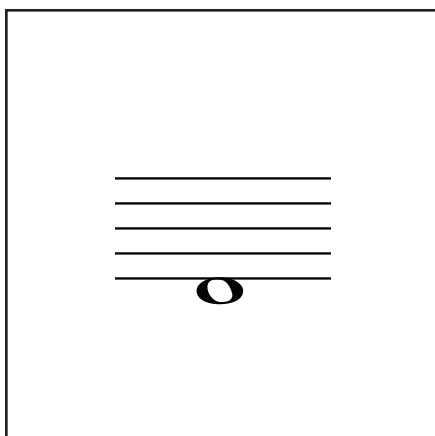
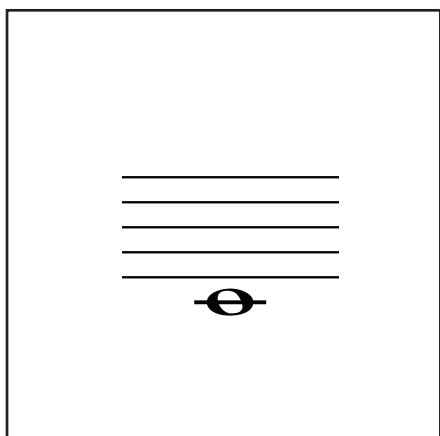
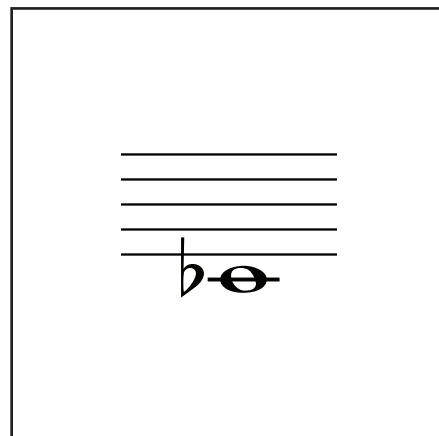
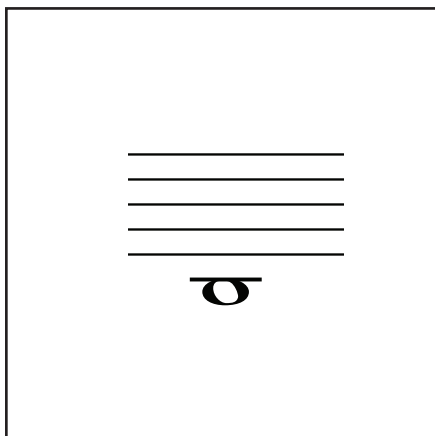
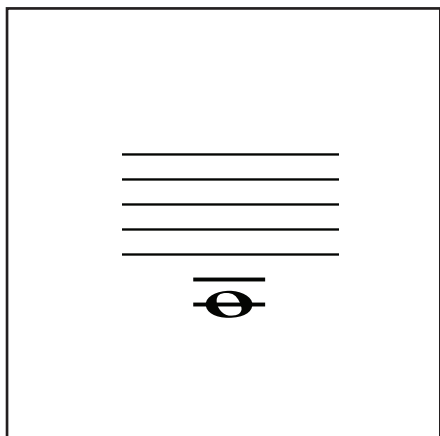


DIE TÖNE DER ENGEN ERSTEN LAGE



Tipp:

Die beiden Seiten doppelseitig auf dickes Papier ausdrucken, die einzelnen Kärtchen ausschneiden und laminieren.

Es

D

C

G

F

E

H

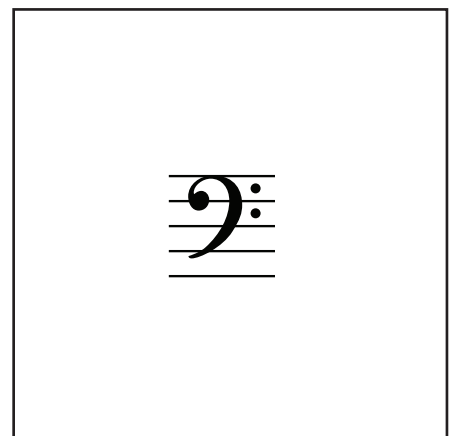
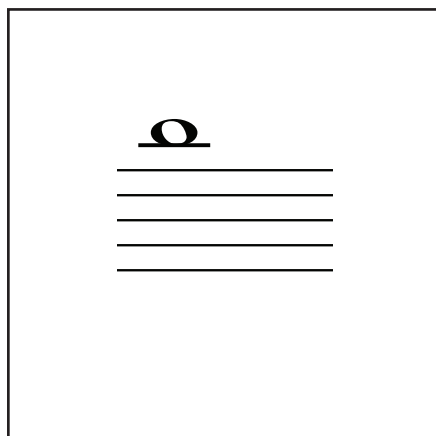
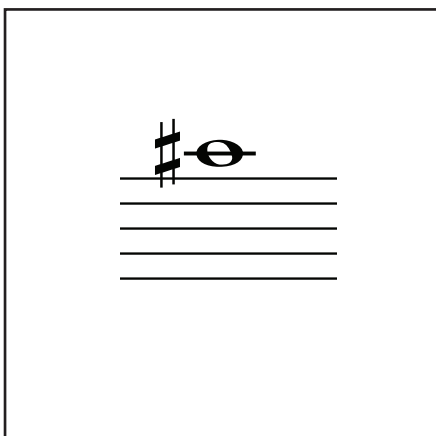
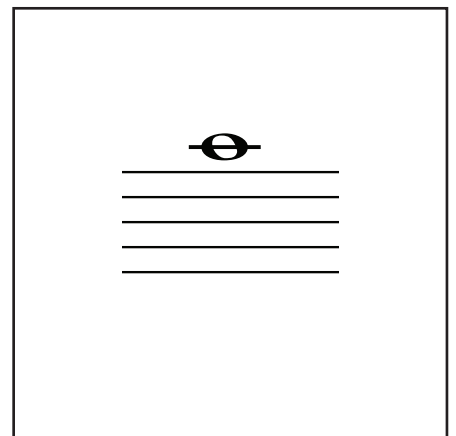
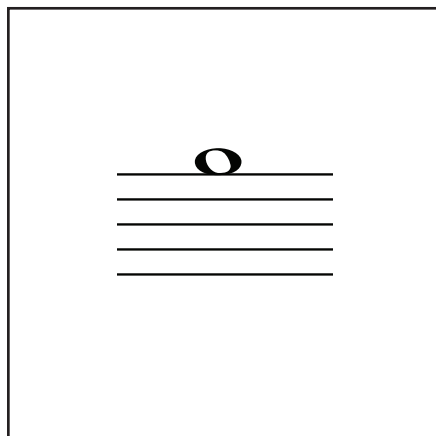
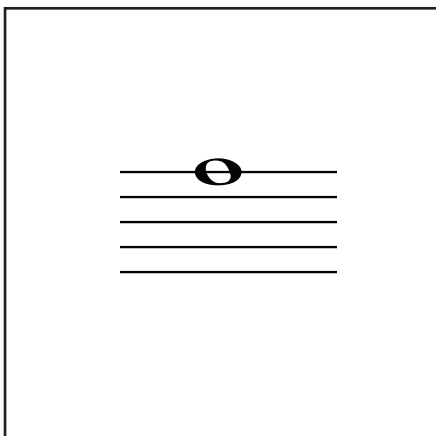
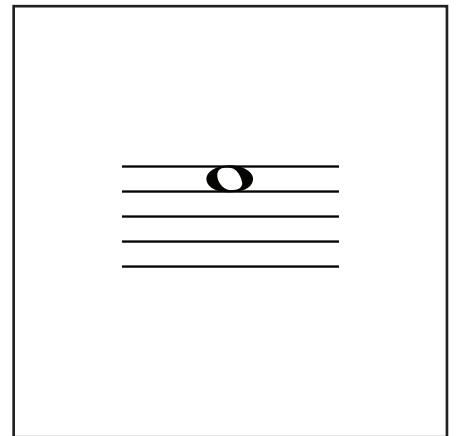
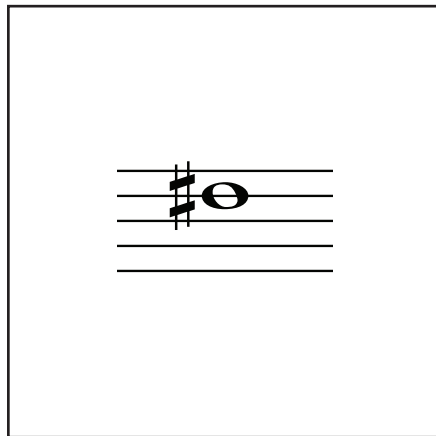
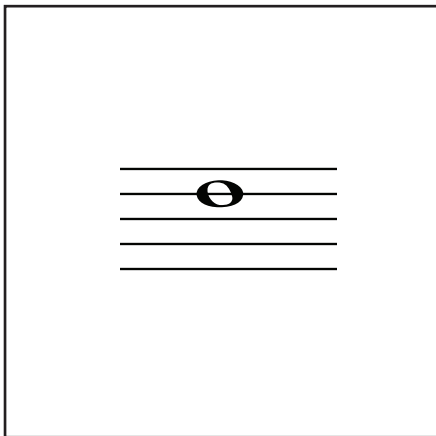
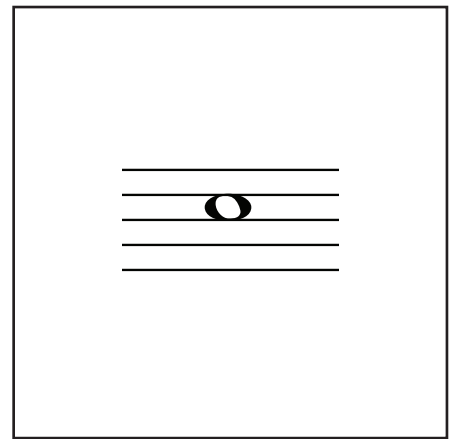
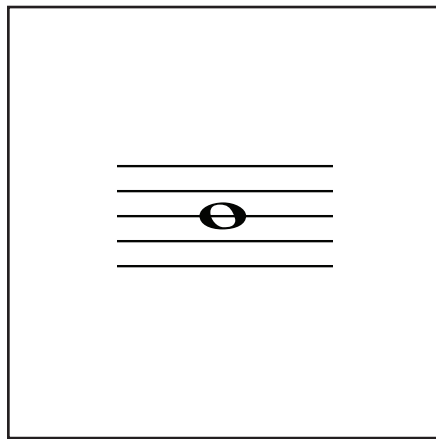
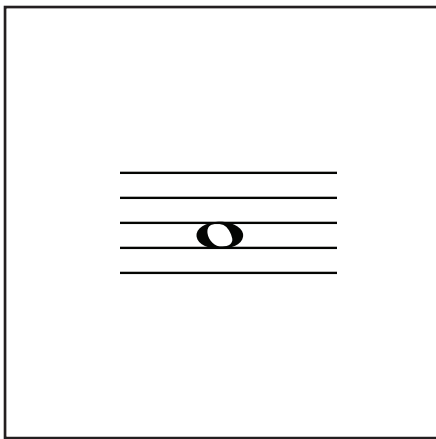
B

A



Tipp:

Die beiden Seiten doppelseitig auf dickeres Papier ausdrucken, die einzelnen Kärtchen ausschneiden und laminieren.



E

D

C

G

Fis

F

C

H

A

Bass-
schlüssel

D

Cis