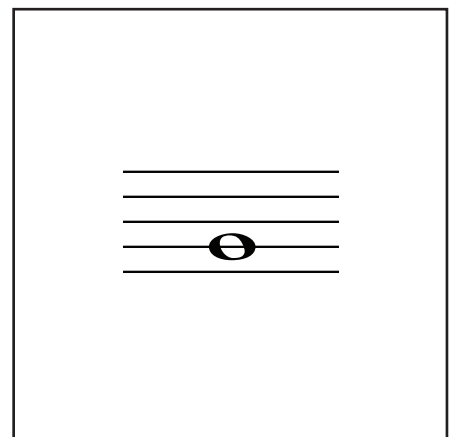
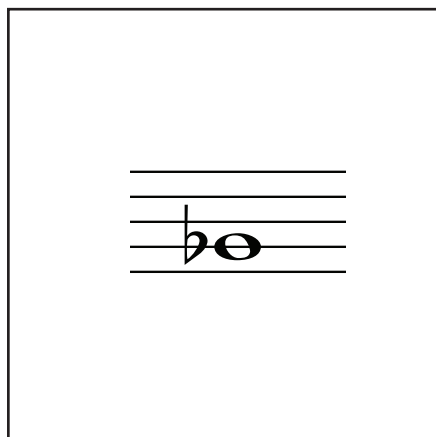
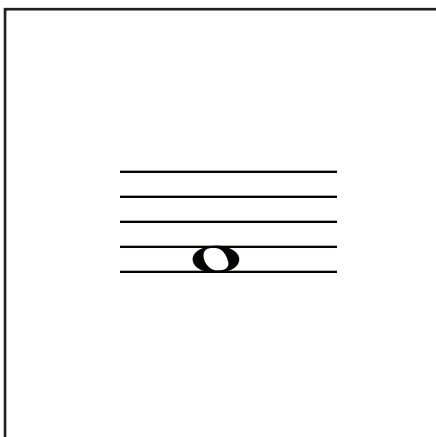
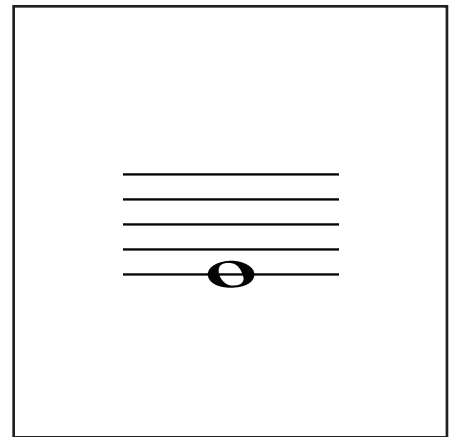
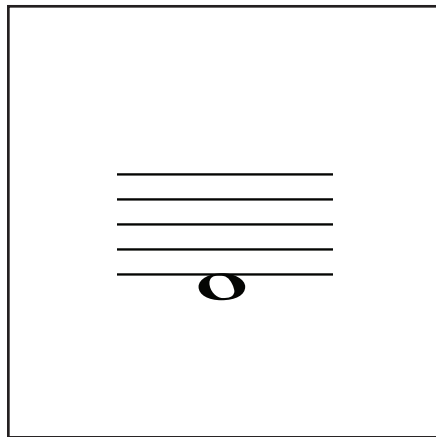
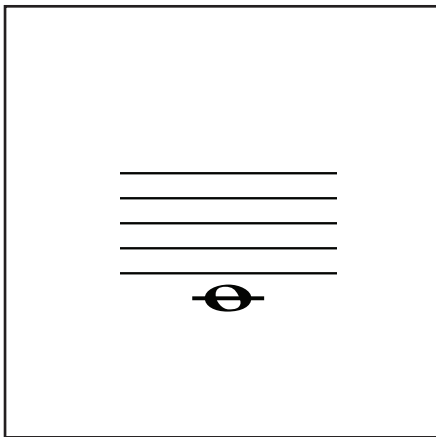
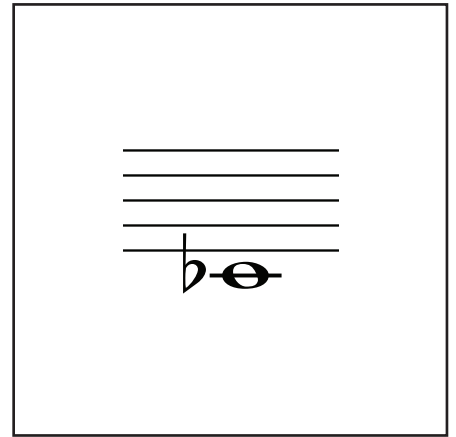
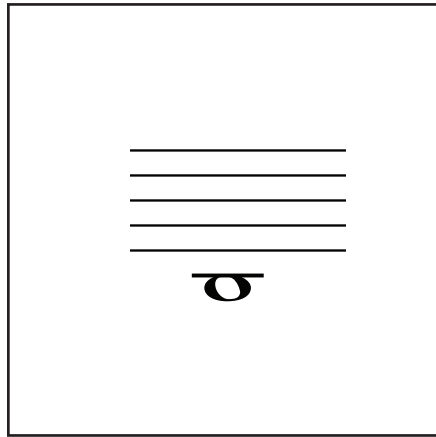
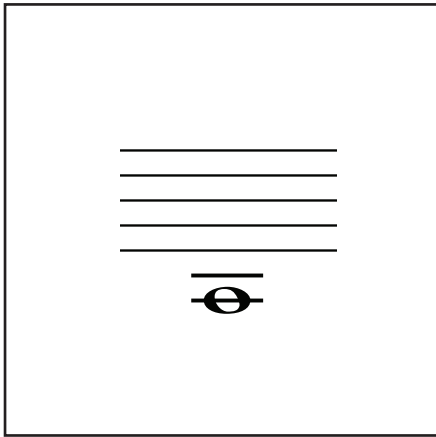


DIE FINGERSÄTZE DER ENGEN ERSTEN LAGE



Tipp:

Die beiden Seiten doppelseitig auf dickes Papier ausdrucken, die einzelnen Kärtchen ausschneiden und laminieren.

2

1

0

0

4

3

3

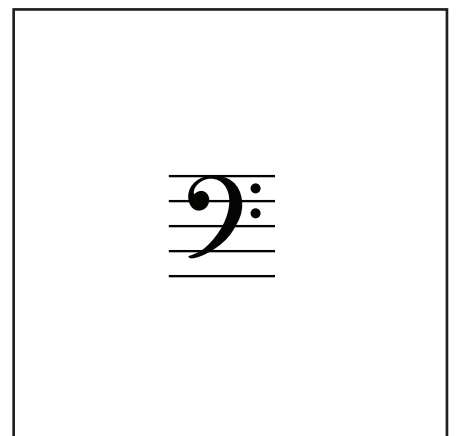
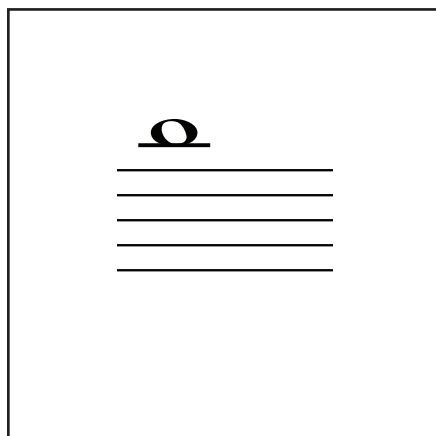
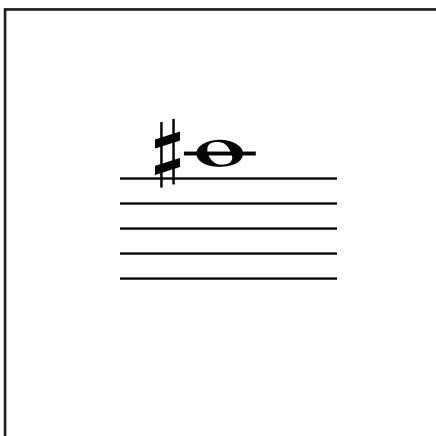
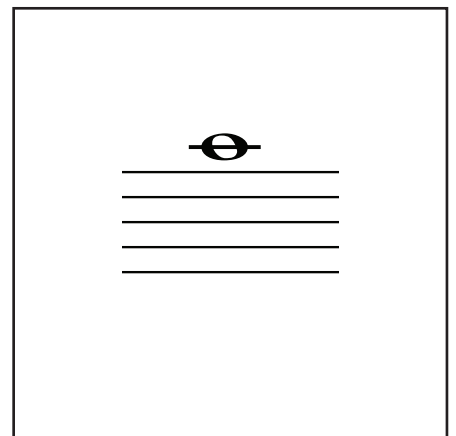
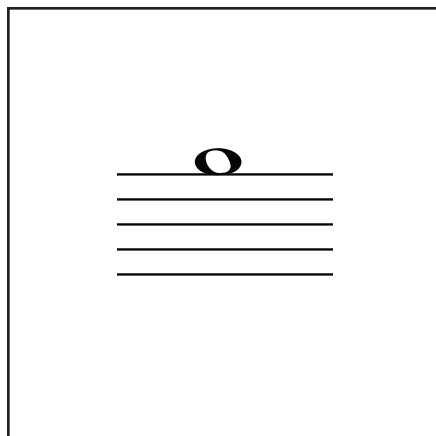
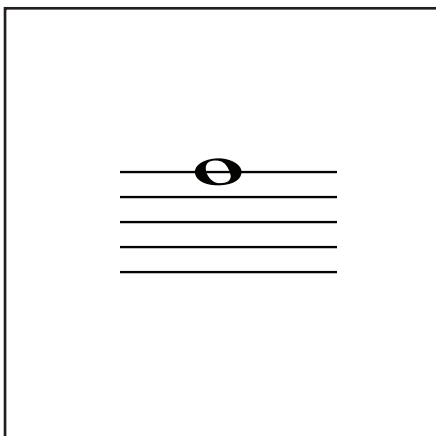
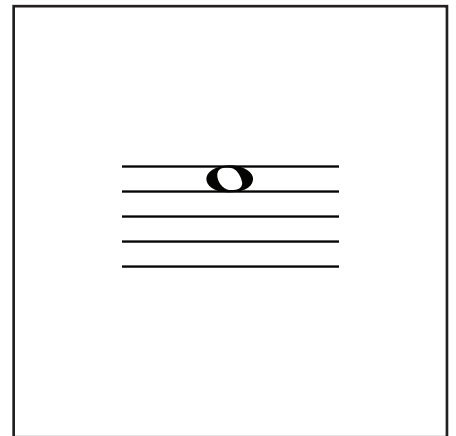
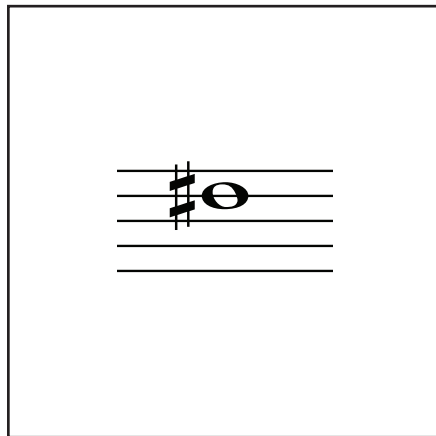
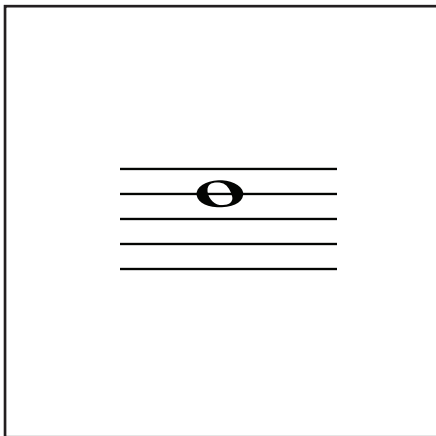
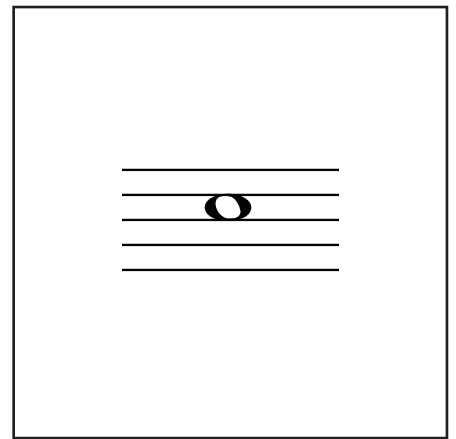
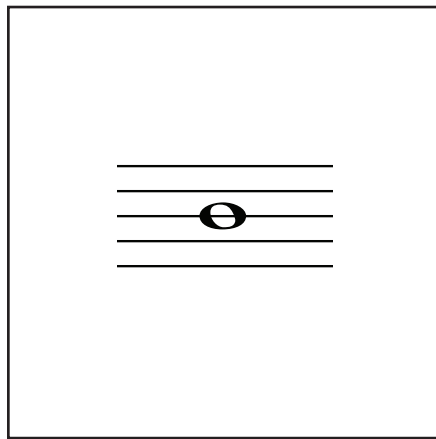
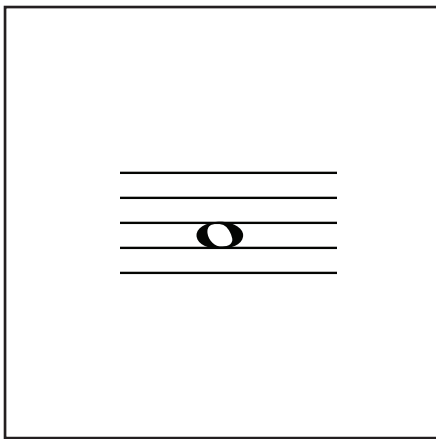
2

1



Tipp:

Die beiden Seiten doppelseitig auf dickeres Papier ausdrucken, die einzelnen Kärtchen ausschneiden und laminieren.



1

0

4

4

3

2

2

1

0

Bass-
schlüssel

4

3